

# How to let us search Japanese patent publications efficiently

Akihiro Ryuka



Copyright 2016, RYUKA

This information is provided for general informational purposes only, and is not intended as legal advice. Because every case is unique, readers should not take any action, or refrain from acting based on this information without first consulting their own attorneys. The law is constantly developing, and this information may not be updated with each and every development. The mere presentation of this information does not create an attorney-client relationship with RYUKA IP Law Firm. RYUKA IP Law Firm specifically and wholly disclaims liability for this information.



# Classification of patent applications in Japan

## 1. IPC

Basic classification in Japan.

Most often used in prior art searches.

## 2. FI

Subclass of IPC.

Helpful when a claim corresponds well with any FI.

## 3. F-term

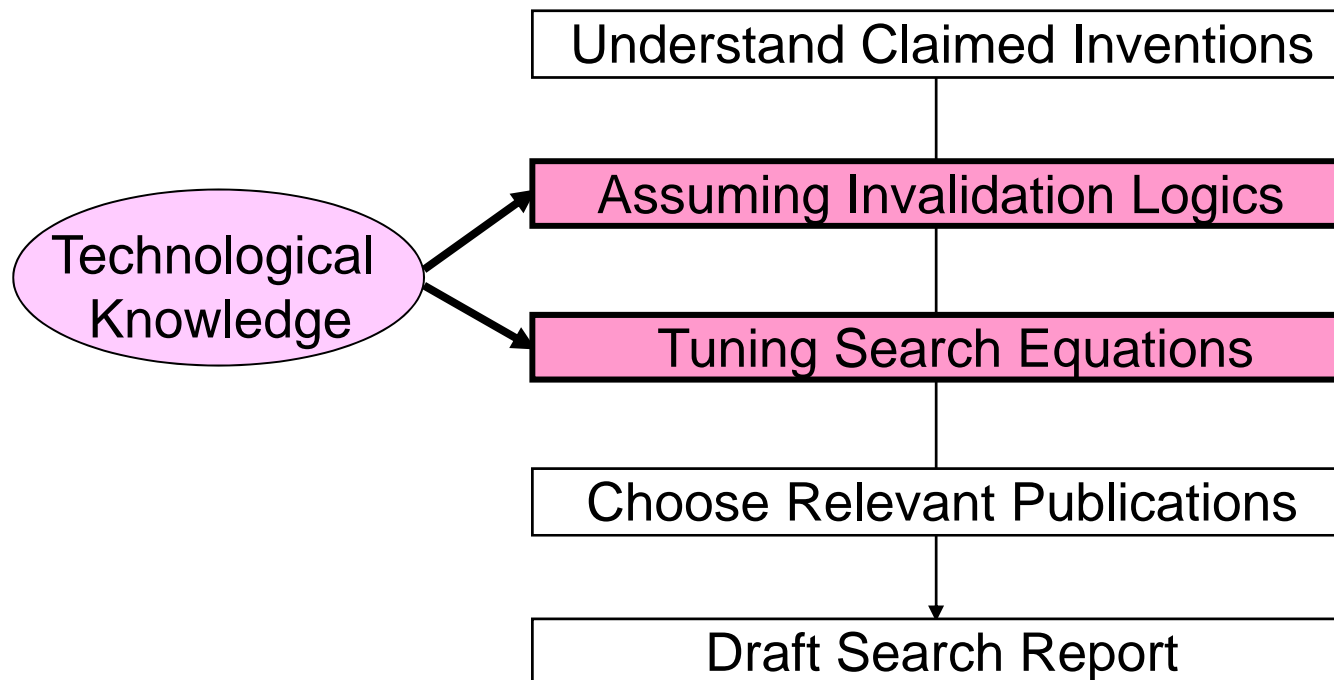
Specifies technical features described in the spec.

Helpful when a claim well corresponds with any F term.

We should identify the most important FI and F-terms.



## Two important steps in prior art searches





## Assuming Invalidation Logics:

Visualizing various embodiments  
of the claimed invention

Visualizing publications  
that disclose the embodiments

Assuming invalidation logics that is based on:  
(1) a single prior art for non-novelty; and  
(2) a combination of prior art for non-inventiveness

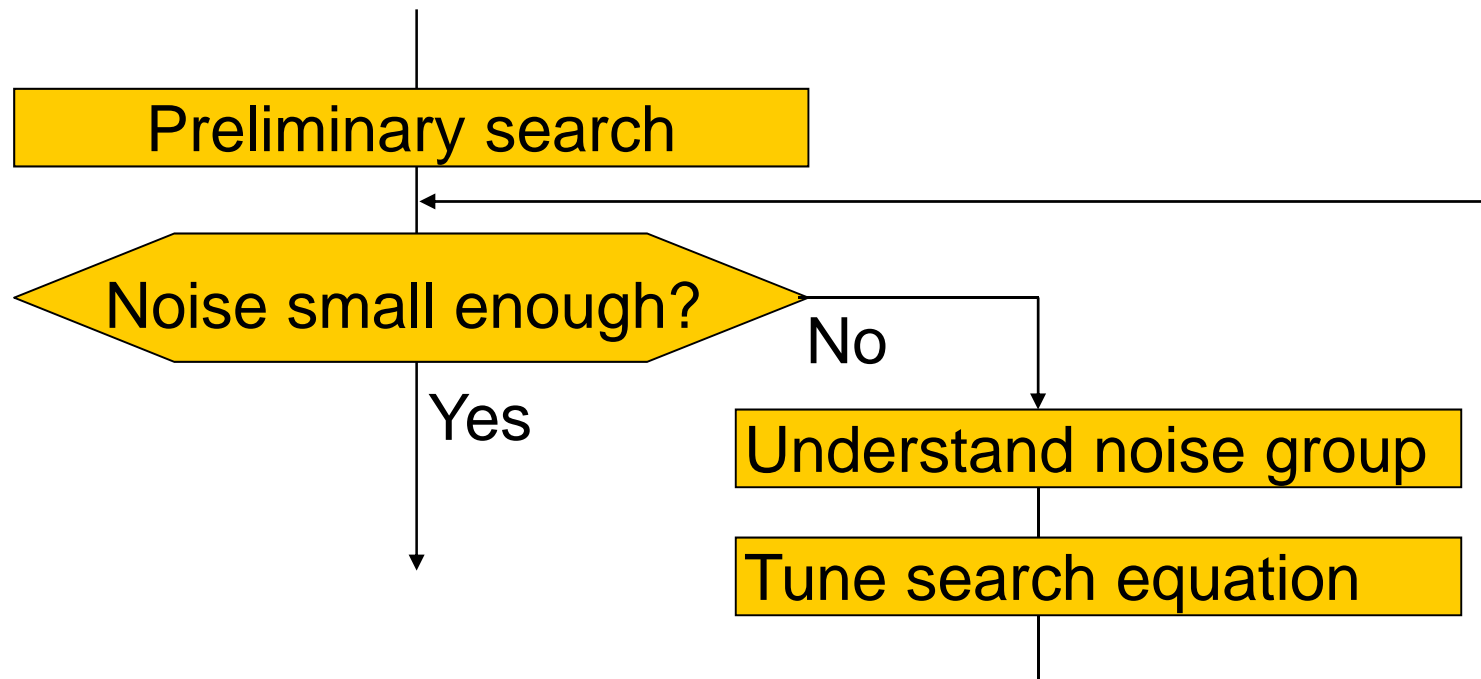


Known prior art helps us understand:

1. Possible embodiments of the claimed inventions,
2. Technical terms, FI, and F-terms of the possible embodiments, and
3. Missing elements.

# Tuning Search Equations:

## Preliminary search is indispensable



Ex.

Claimed Invention: Fuel cell for a [car](#)

Noise group: Fuel cell for a [mobile phone](#)



## Other search results help us understand:

1. Possible noise group, and
2. How the equations can be further tuned, in view of the missing elements.

### Other Search Results

Search Equation

Claim Elements  
being disclosed

Close Prior Art

Claim Elements  
NOT disclosed



## Japanese patent search is recommended, if:

1. Japanese companies were active in a relevant patent field or strong in related product markets.

Example: memory, processor, optical device, disc controller, power controller, video codec, audio codec, steppers, and patterning masks

We are able to provide information on whether or not Japanese companies were active or strong upon receiving a patent number.



Japanese patent search is **recommended**, if:

2. Prior art has not been found in English language patent publications

Searching Japanese patent publications may be more productive than searching English academic papers.



## Our Search Report can additionally include:

1. **Full or Partial Translation** of the most relevant prior art, and
2. **Comparison Table** of each claimed element and prior art description.

Those fees are relatively small because claimed inventions are already studied.



## What information helps us decide what to translate?

1. The most relevant publications already found  
This can be included in our comparison table as well.
2. Comparison table (already made)  
Links the publications with the claim elements.  
Our comparison table can be the one updated from the received table.